



Element Full Zip Hooded Fleece



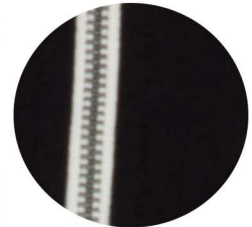
KOI2049

Product Features:

- 9.8 oz, 60/40 cotton/polyester lightweight fleece
- Combed and ring spun cotton
- Ultra soft 32 single cotton

Adult sizes: XS-4XL

Icons/Fabric Features:



Available Colours and PMS Colours

Textile fabric colours are subject to dye lot variation and will not be exact match to print pantone reference

ONYX



Black 6C

KOI2049 - KOI® Element Full Zip Hooded Fleece

GARMENT MEASUREMENTS

Size	XS	S	M	L	XL	2XL	3XL	4XL
Chest - <i>Half Measure</i>	17 3/4"	19 1/4"	20 3/4"	22 1/4"	23 3/4"	25 1/4"	27 1/4"	29 1/4"
Chest - <i>Full Measure</i>	35 1/2"	38 1/2"	41 1/2"	44 1/2"	47 1/2"	50 1/2"	54 1/2"	58 1/2"
Body Length from HPS	28 1/2"	29"	29 1/2"	30"	31"	32"	32 1/2"	33"
Sleeve Length-CB	34 3/4"	35 1/2"	36 1/4"	37"	37 3/4"	38 1/2"	39 1/2"	40 1/2"

Finished measurements in inches. Refer to "How to Measure" guide for detailed information on measurement instructions.

ADULT General Sizing Guide

Size	XS	S	M	L	XL	2XL	3XL	4XL
Chest	30"-32"	34"-36"	38"-40"	42"-44"	46"-48"	50"-52"	54"-55"	56"-57"
Waist	26"-29"	29"-32"	32"-35"	35"-38"	38"-41"	41"-44"	44"-47"	47"-50"
Sleeve Length-CB	31"-32"	32"-33 1/2"	34"-35"	35"-36"	36"-37"	37"-38"	38"-39"	38 1/2"-39"

