



# #590300 MEN'S C2 SPORT POLO

- 100% Polyester moisture management/antimicrobial performance fabric
- Shoulder panels
- Three button placket
- Solid knit collar
- Taped back neck
- Double-needle hem

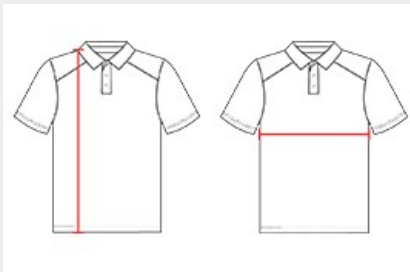
## COLORS



## SPECIFICATIONS

COLOR	XS	S	M	L	XL	2XL	3XL	4XL
<b>Piece Weight</b> measured in pounds	0.50	0.50	0.50	0.50	0.50	0.50	0.50	0.50
<b>Spec Body Length</b> measured in inches	27.5	28.5	29.5	30.5	31.5	32.5	33.5	34.5
<b>Spec Chest Width</b> measured in inches	17	19	21	23	25	27	29	31
<b>Case Count</b> # of units per case	72	72	72	72	72	72	36	36

## HOW TO MEASURE



These product specifications reference a product's measurements. For sizing information and guidance, please reference our sizing charts.

### BODY LENGTH

Measured on the front from the shoulder/neck intersection to the bottom of the garment.

### CHEST WIDTH

Measured across the chest, 1" below the armhole seam.