

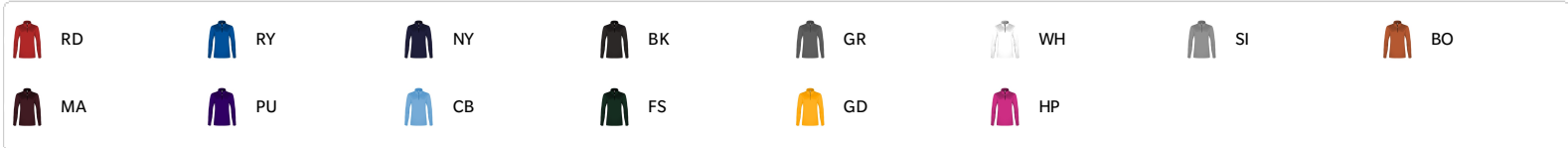


#560200 WOMEN'S

C2 WOMEN'S 1/4 ZIP

- 100% Polyester moisture management/antimicrobial performance fabric
- Self-fabric collar with 8" locking zipper
- Double-needle hem

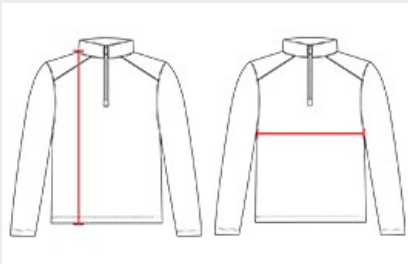
COLORS



SPECIFICATIONS

COLOR	XS	S	M	L	XL	2XL
Piece Weight measured in pounds	0.55	0.55	0.55	0.55	0.55	0.55
Case Count # of units per case	1	1	1	1	1	1

HOW TO MEASURE



These product specifications reference a product's measurements. For sizing information and guidance, please reference our sizing charts.

BODY LENGTH

Measured on the front from the shoulder/neck intersection to the bottom of the garment.

CHEST WIDTH

Measured across the chest, 1" below the armhole seam.