



#550100 MEN'S

C2 FLEECE CREW

- 8 oz. Ringspun 60% cotton/40% Polyester fabric
- Spandex reinforced rib knit cuffs and waistband
- Twill taped neckline
- V-Patch front and half moon back with room for embellishment

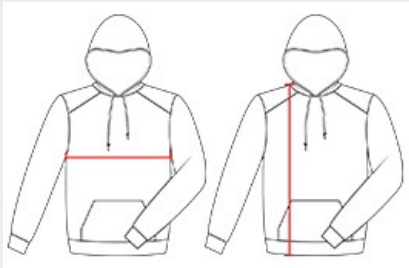
COLORS



SPECIFICATIONS

COLOR	XS	S	M	L	XL	2XL	3XL	4XL
Piece Weight measured in pounds	1.10	1.10	1.10	1.10	1.10	1.10	1.10	1.10
Spec Body Length measured in inches	28	28.5	29	29.5	30	30.5	31	31.5
Spec Chest Width measured in inches	18	20	22	24	26	28	30	32
Case Count # of units per case	24	24	24	24	24	24	12	12

HOW TO MEASURE



These product specifications reference a product's measurements. For sizing information and guidance, please reference our sizing charts.

BODY LENGTH

Measured on the front from the shoulder/neck intersection to the bottom of the garment.

CHEST WIDTH

Measured across the chest, 1" below the armhole seam.