



#550000 ADULT

C2 FLEECE HOOD

- 8 oz. 60% Cotton/40% Polyester Ringspun fleece fabric
- Two-ply hood with drawcord
- Spandex reinforced rib knit cuffs and waistband
- Pouch front pocket with headset opening

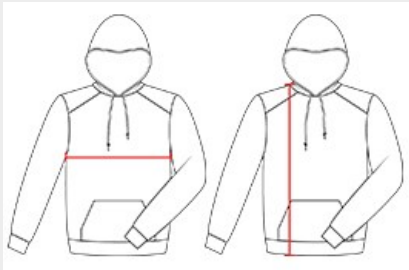
COLORS



SPECIFICATIONS

| COLOR | XS | S | M | L | XL | 2XL | 3XL | 4XL |
|---|--------|------|--------|------|--------|------|--------|------|
| Piece Weight measured in pounds | 1.10 | 1.10 | 1.10 | 1.10 | 1.10 | 1.10 | 1.10 | 1.10 |
| Spec Body Length measured in inches | 27 1/2 | 28 | 28 1/2 | 29 | 29 1/2 | 30 | 30 1/2 | 31 |
| Spec Chest Width measured in inches | 19 | 20 | 22 | 24 | 26 | 28 | 30 | 32 |
| Case Count # of units per case | 24 | 24 | 24 | 24 | 24 | 24 | 12 | 12 |

HOW TO MEASURE



These product specifications reference a product's measurements. For sizing information and guidance, please reference our sizing charts.

BODY LENGTH

Measured on the front from the shoulder/neck intersection to the bottom of the garment.

CHEST WIDTH

Measured across the chest, 1" below the armhole seam.