



#428600 WOMEN'S 1/4 ZIP WOMEN'S LIGHTWEIGHT PULLOVER

- Badger Sport paneled shoulder for maximum movement
- 94% Polyester / 6% Spandex moisture management/antimicrobial performance fabric
- Paneled sleeve w/ thumbhole
- Embroidered Badger logo on left sleeve
- Self-fabric collar with 8" locking zipper

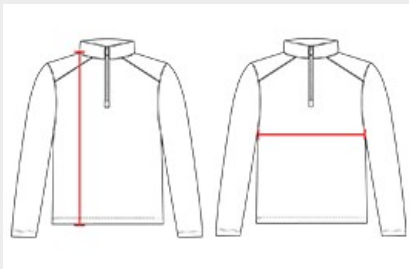
COLORS



SPECIFICATIONS

COLOR	XS	S	M	L	XL	2XL
Piece Weight measured in pounds	0.36	0.36	0.36	0.36	0.36	0.36
Spec Body Length measured in inches	23	24	25	26	27	28
Spec Chest Width measured in inches	13	15	17	19	21	23
Case Count # of units per case	36	36	36	36	36	36

HOW TO MEASURE



These product specifications reference a product's measurements. For sizing information and guidance, please reference our sizing charts.

BODY LENGTH

Measured on the front from the shoulder/neck intersection to the bottom of the garment.

CHEST WIDTH

Measured across the chest, 1" below the armhole seam.