



#428000 MEN'S

1/4 ZIP LIGHTWEIGHT PULLOVER

- Badger Sport paneled shoulder for maximum movement
- Paneled sleeve
- 94% Polyester / 6% Spandex moisture management/antimicrobial performance fabric
- Embroidered badger logo on left sleeve
- Self-fabric collar with 8" locking zipper

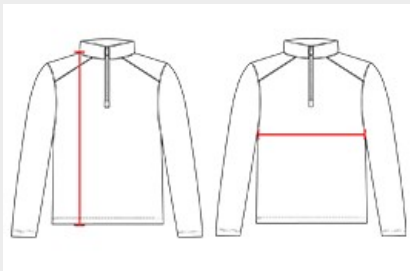
COLORS



SPECIFICATIONS

COLOR	XS	S	M	L	XL	2XL	3XL	4XL
Piece Weight measured in pounds	0.36	0.36	0.36	0.36	0.36	0.36	0.36	0.36
Spec Body Length measured in inches	26	27	28	29	30	31	32	33
Spec Chest Width measured in inches	16	17	19	21	23	25	27	29
Case Count # of units per case	36	36	36	36	36	36	24	24

HOW TO MEASURE



These product specifications reference a product's measurements. For sizing information and guidance, please reference our sizing charts.

BODY LENGTH

Measured on the front from the shoulder/neck intersection to the bottom of the garment.

CHEST WIDTH

Measured across the chest, 1" below the armhole seam.