



#A00167 MEN'S

DAZZLE MESH PRACTICE JERSEY

- 100% Extreme Porthole Mesh Cationic Colorfast Polyester 200 Denier Porthole Mesh
- 100% Extreme Dazzle Cationic Colorfast Polyester With Moisture Management Finish
- Waist Length Jersey
- Porthole Mesh Body And Under Sleeves For Increased Durability And Breathability

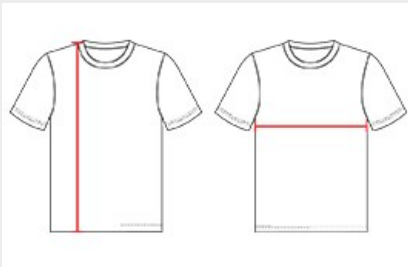
COLORS



SPECIFICATIONS

| COLOR | S/M | L/XL | 2XL/3XL |
|-------------------------------------------|------|------|---------|
| Piece Weight measured in pounds | 0.51 | 0.51 | 0.51 |
| Case Count # of units per case | 70 | 60 | 30 |

HOW TO MEASURE



These product specifications reference a product's measurements. For sizing information and guidance, please reference our sizing charts.

BODY LENGTH

Measured on the front from the shoulder/neck intersection to the bottom of the garment.

CHEST WIDTH

Measured across the chest, 1" below the armhole seam.