



# # 560400 WOMEN'S C2L/SWOMEN'STEE

- 100% Polyester moisture management/antimicrobial performance fabric
- Double-needle hem
- Self-fabric collar and cuffs

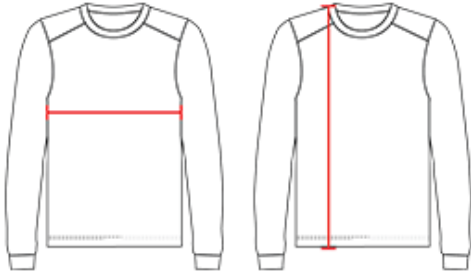
## COLORS



## SPECIFICATIONS

|   | XS     | S      | M    | L    | XL   | 2XL  |
|---|--------|--------|------|------|------|------|
| <b>Piece Weight</b><br>measured in pounds     | 0.22   | 0.22   | 0.22 | 0.22 | 0.22 | 0.22 |
| <b>Spec Body Length</b><br>measured in inches | 24     | 25     | 26   | 27   | 28   | 29   |
| <b>Spec Chest Width</b><br>measured in inches | 15 1/2 | 17 1/2 | 19   | 21   | 23   | 25   |
| <b>Case Count</b><br># of units per case      | 72     | 72     | 72   | 72   | 72   | 72   |

## HOW TO MEASURE



These product specifications reference a product's measurements. For sizing information and guidance, please reference our sizing charts.

**BODY LENGTH**

Measured on the front from the shoulder/neck intersection to the bottom of the garment.

**CHEST WIDTH**

Measured across the chest, 1" below the armhole seam.