



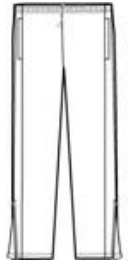
Whether worn alone or with a Sport-Tek® wind shirt, these water-repellent pants provide lightweight protection. The relaxed styling and elastic drawcord waist ensure a comfortable fit.

- 100% polyester
- 100% polyester mesh lining above knees, poly lining below for easy on/off
- Elastic waistband
- No drawcord
- Side pockets
- Back pocket with hook and loop closure
- Extended leg zippers

CARE INSTRUCTIONS

Machine wash cold, gentle cycle with like colors. Use mild detergent, remove immediately. Do not allow to lay on itself when wet. Do not bleach.

[Tips For Effectively Screen Printing Polyester Fabrics](#)

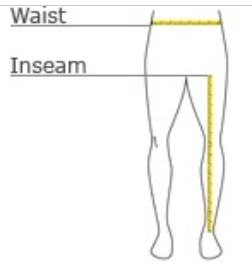


front



back

HOW TO MEASURE



WAIST

Measure waist at the height pants are normally worn, and keep tape comfortably loose.

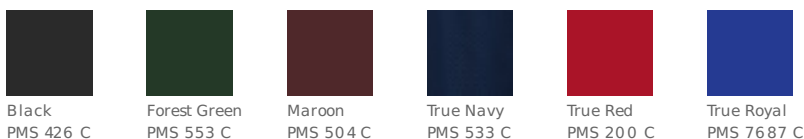
INSEAM

Measure a similar style pant that fits well and is the desired length. Measure from the crotch seam to the hem.

SIZE CHART

	XS	S	M	L	XL
Waist	21-22	22-25	25-26	26-27	27-29
Inseam	22 1/2	25 1/2	27 1/2	30 1/2	33 1/2

COLOR INFORMATION



Black PMS 426 C Forest Green PMS 553 C Maroon PMS 504 C True Navy PMS 533 C True Red PMS 200 C True Royal PMS 7687 C