



Inspired by classic double knit sets, this moisture-wicking jacket shows that you are part of the team.

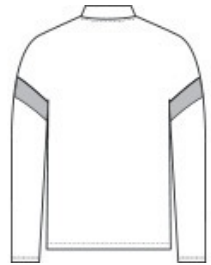
- 100% recycled polyester double knit
- Tag-free label
- Self-fabric locker loop
- Coil zipper
- Side slash pockets
- Contrast self-fabric detail on sleeves

CARE INSTRUCTIONS

Machine Wash Cold With Like Colors. Only Non-Chlorine Bleach When Needed. Tumble Dry Low. Cool Iron if Necessary. Do Not Dry Clean.



front



back

HOW TO MEASURE



CHEST WIDTH

Measure under the arm and around the fullest part of the chest with arms down, keeping tape horizontal.

SIZE CHART

| | XS | S | M | L | XL | 2XL | 3XL | 4XL |
|-------|-------|-------|-------|-------|-------|-------|-------|-------|
| Chest | 32-34 | 35-37 | 38-40 | 41-43 | 44-46 | 47-49 | 50-53 | 54-57 |

COLOR INFORMATION



Black/ Black
PMS BLACK C



Black/ White
PMS BLACK C



Deep Red/ White
PMS 201C



Iron Grey/ White
PMS 7540C



True Navy/ White
PMS 533C



True Royal/ White
PMS 7687C



White/ Iron Grey
PMS 7540C