



Go the distance in this moisture-wicking pant.

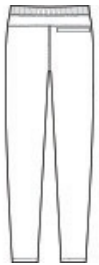
- 3.5-ounce, 90/10 poly/spandex w ith PosiCharge® technology
- Snag-resistant
- Tear-away label
- Elastic waist band
- Interior draw cord
- Two slash pockets
- Zippered back pocket

CARE INSTRUCTIONS

Machine Wash Cold With Like Colors. Do Not Use Fabric Softener. Do Not Bleach. Tumble Dry Low. Remove Promptly. Cool Iron If Necessary.

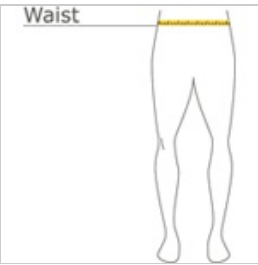


front



back

HOW TO MEASURE



WAIST

Measure around the smallest part of the natural waist.

SIZE CHART

| | XS | S | M | L | XL | 2XL | 3XL | 4XL |
|-------|-------|-------|-------|-------|-------|-------|-------|-------|
| Waist | 26-28 | 29-31 | 32-34 | 35-37 | 38-40 | 41-43 | 44-47 | 48-51 |

COLOR INFORMATION



Black
PMS BLACK C



Iron Grey
PMS 7540C



True Navy
PMS 533C