



For mild weather protection, nothing beats the comfortable fit and easy mobility of our water-repellent anorak. Sporty colorblocking and a 1/2-zip front make this soft anorak an excellent alternative to a wind shirt or jacket.

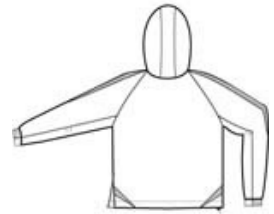
- 100% polyester shell
- 100% polyester jersey lining with mesh insets at gussets for added breathability
- Drawcord hood with toggle
- Raglan sleeves
- Front pouch pocket
- Articulated elbows for greater mobility
- Half elastic, half self-fabric cuffs for comfort
- Left side seam zipper for easy on/off
- Drawcord hem with toggle

CARE INSTRUCTIONS

Machine wash cold. Gentle cycle with like colors. Use mild detergent, remove immediately. Do not allow to lay on itself when wet. Do not bleach. Tumble dry low. Cool iron, if needed.



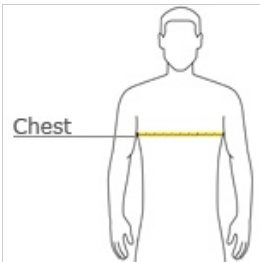
front



back

[Tips For Effectively Screen Printing Polyester Fabrics](#)

HOW TO MEASURE










CHEST
With arms down at sides, measure around the upper body, under arms and over the fullest part of the chest.

SIZE CHART

	XS	S	M	L	XL	2XL	3XL	4XL	5XL	6XL
Chest	32-34	35-37	38-40	41-43	44-46	47-49	50-53	54-57	58-60	61-63

COLOR INFORMATION

						
Black/White PMS 426 C	Forest Green/White PMS 7736 C	Kelly Green/White PMS 341 C	Maroon/White PMS 504 C	True Navy/White PMS 533 C	True Red/White PMS 200 C	True Royal/White PMS 2757 C