

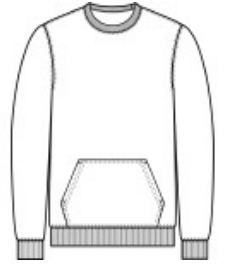
**Port & Company® Core Fleece Crewneck Pocket  
Sweatshirt PC78PKT**

You asked. We listened. Now a cozy crew sweatshirt with a pocket in our core weight.

- 7.8-ounce, 50/50 cotton/poly fleece
- Air jet yarn for softness
- Front pouch pocket
- Tear-away label

**CARE INSTRUCTIONS**

Machine Wash Cold. Do Not Bleach. Tumble Dry Low. Cool Iron If Necessary.



front



back

**HOW TO MEASURE**



**CHEST WIDTH**

Measure under the arm and around the fullest part of the chest with arms down, keeping tape horizontal.

**SIZE CHART**

	S	M	L	XL	2XL	3XL	4XL
Chest	35-37	38-40	41-43	44-46	47-49	50-53	54-57

**COLOR INFORMATION**



Athletic Heather  
PMS COOL GRAY  
7C



Dark Heather Grey  
PMS 7540C



Jet Black  
PMS BLACK C



Oatmeal Heather



Olive Drab Green  
PMS 7771C



True Navy  
PMS 533C



True Royal  
PMS 7687C



White