

PORT AUTHORITY

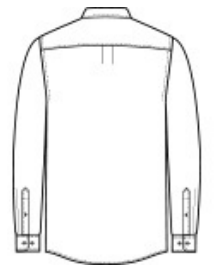
Port Authority® Long Sleeve Nailhead Easy Care Shirt W816

Elevate your business-casual vibe with a budget-friendly shirt that's polished and professional. The subtle two-color nailhead pattern adds a touch of refinement.

- 4-ounce, 60/40 cotton/recycled polyester
- Easy care
- Button-down collar
- Left chest pocket
- Center back pleat
- Dyed-to-match pearlized buttons
- Rounded adjustable barrel cuffs

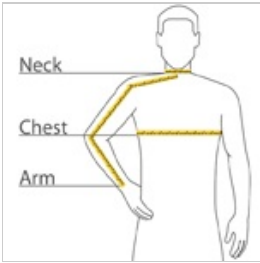


front



back

HOW TO MEASURE



CHEST WIDTH

Measure under the arm and around the fullest part of the chest with arms down, keeping tape horizontal.

NECK

Measure around the fullest part of the neck at the base.

ARM

Place hand on hip. Start at the center of the back of the neck and measure across the shoulder, to the elbow, and then down to the wrist.

SIZE CHART

	XS	S	M	L	XL	2XL	3XL	4XL
Chest	32-34	35-37	38-40	41-43	44-46	47-49	50-53	54-57
Neck	14 1/2-15	15-15 1/2	15 1/2-16	16-16 1/2	16 1/2-17	17-17 1/2	17 1/2-18	18-18 1/2
Arm	30 1/2	32	34	35	36 1/2	37 1/2	38 1/2	39 1/2

COLOR INFORMATION

Please note: PMS code information is shown only when an exact match is available.



Deep Black



Gusty Grey



Mediterranean Blue



Swiss Blue



White