

Port Authority® Long Sleeve Ombre Plaid Shirt W672

Casual and cool, this unique ombre plaid shirt is perfect for a uniform look that is laid back, yet polished.

- 4.6-ounce, 59/39/2 cotton/polyester/spandex
- Lightly brushed twill plaid
- Easy Care
- Open collar
- Bias-cut back yoke
- Double-chest pockets with bias-cut button flaps
- Pearlized buttons
- Double-button cuffs

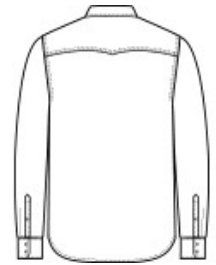
**

CARE INSTRUCTIONS

Machine Wash Cold With Like Colors. Only Non-Chlorine Bleach If Needed. Tumble Dry Low. Warm Iron If Needed.

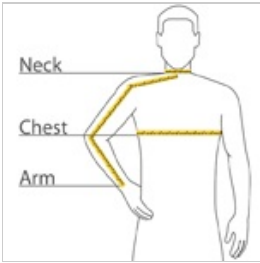


front



back

HOW TO MEASURE



CHEST WIDTH

Measure under the arm and around the fullest part of the chest with arms down, keeping tape horizontal.

NECK

Measure around the fullest part of the neck at the base.

ARM

Place hand on hip. Start at the center of the back of the neck and measure across the shoulder, to the elbow, and then down to the wrist.

SIZE CHART

	XS	S	M	L	XL	2XL	3XL	4XL
Chest	32-34	35-37	38-40	41-43	44-46	47-49	50-53	54-57
Neck	14 1/2 - 15	15 - 15 1/2	15 1/2 - 16	16 - 16 1/2	16 1/2 - 17	17 - 17 1/2	17 1/2 - 18	18 - 18 1/2
Arm	30 1/2	32	34	35	36 1/2	37 1/2	38 1/2	39 1/2

COLOR INFORMATION



Deep Black
PMS BLACK C



Frost Grey



True Navy