



Designed to meet the needs of active uniforming, our moisture-wicking, snag-resistant 1/4-zips have the Silk Touch hand you've loved for years plus PosiCharge® technology for exceptional color-locking performance.

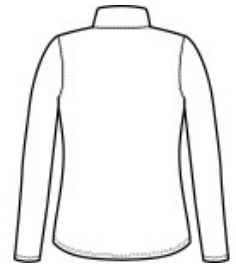
- 4-ounce, 100% polyester double knit with PosiCharge technology
- Cadet collar
- Contrast inner collar
- Tag-free label
- Front seaming
- Sleeve seaming
- Binding at cuffs
- Curved hem

CARE INSTRUCTIONS

Machine wash cold With like colors Do not bleach Do not use fabric softener Tumble dry low Remove promptly Cool iron if needed Do not dry clean



front



back

HOW TO MEASURE


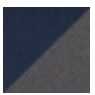

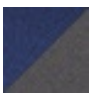



BUST
Measure under the arm and around the fullest part of the bust with arms down, keeping tape horizontal.

SIZE CHART

	XS	S	M	L	XL	XXL	3XL	4XL
Size	2	4/6	8/10	12/14	16/18	20/22	24/26	28/30
Bust	32-34	35-36	37-38	39-41	42-44	45-47	48-51	52-55

COLOR INFORMATION

				
Black/ Steel Grey PMS NTR BLACK C	Navy/ Steel Grey PMS 533C	Grey/Red/ Black PMS 187C	Royal/ Steel Grey PMS 3597C	Steel Grey/ Black PMS 7540C