

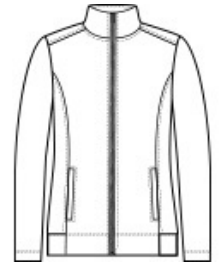


Plush and super warm, this brushed-fleece jacket has an understated striped pattern and plenty of stretch for easy movement.

- 11.5-ounce, 100% polyester fleece bonded to 100% polyester high-pile fleece
- Coil zipper at center front
- Open front pockets
- Open cuffs and hem

**CARE INSTRUCTIONS**

Machine wash cold separately. Do not bleach. Tumble dry low. Remove promptly. Cool iron if necessary. Do not dry clean.



front



back

**HOW TO MEASURE**



**BUST**  
Measure under the arm and around the fullest part of the bust with arms down, keeping tape horizontal.

**SIZE CHART**

	XS	S	M	L	XL	XXL	3XL	4XL
Size	2	4/6	8/10	12/14	16/18	20/22	24/26	28/30
Bust	32-34	35-36	37-38	39-41	42-44	45-47	48-51	52-55

**COLOR INFORMATION**



Graphite/ Deep Black  
PMS 7540C



Gusty Grey/ Sterling Grey  
PMS COOL GREY  
8C



Insignia Blue/ River Blue Navy  
PMS 2378C