



Ultra-soft meets cozy warmth in this layerable sherpa fleece hoodie. Ideal for cooler days, it's comfortable, versatile and designed to fend off the chill in style.

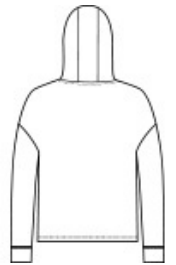
- 6.8-ounce, 100% polyester sherpa fleece
- Three-panel hood
- Drop shoulder
- Open cuffs and hem

CARE INSTRUCTIONS

Machine wash cold separately. Do not bleach. Tumble dry low. Remove promptly. Cool iron if necessary or dry clean.

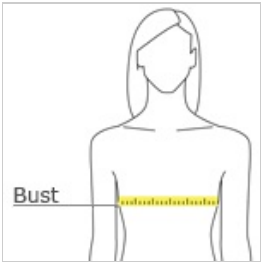


front



back

HOW TO MEASURE



BUST
Measure under the arm and around the fullest part of the bust with arms down, keeping tape horizontal.

SIZE CHART

	XS	S	M	L	XL	XXL	3XL	4XL
Size	2	4/6	8/10	12/14	16/18	20/22	24/26	28/30
Bust	32-34	35-36	37-38	39-41	42-44	45-47	48-51	52-55

COLOR INFORMATION



Black
PMS BLACK C



Grey Heather



Marshmallow
PMS 7527C