

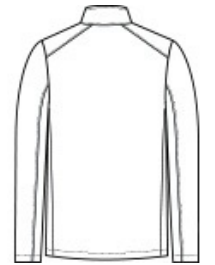


Thanks to a 100% recycled polyester shell, our popular Core Soft Shell just went carbon neutral.

- 100% recycled polyester shell
- 100% polyester brushed microfleece lining
- Fabric w aterproof rating: 1000MM
- Fabric breathability rating: 1000G/M2
- Reverse coil zippers
- Right chest zippered pocket
- Front zippered pockets
- Open cuffs and hem
- Water protection method: Laminate film and w ater-resistant finish



front



back

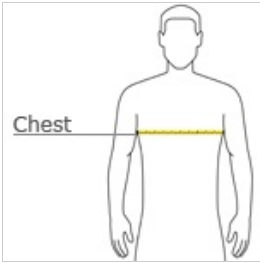
A C-FREE® Product

We start by reducing the product's impact by switching to at least 50% preferred materials. We then neutralize the total carbon footprint of each product in the C-FREE program-from the product's initial raw materials to its end-of-life-through Carbonfree® certification. This certification purchases third-party, verified carbon offsets through Carbonfund.

CARE INSTRUCTIONS

Machine Wash Cold. Do Not Use Fabric Softener. Only Non-Chlorine Bleach, When Needed. Tumble Dry Low. Cool Iron, if Necessary. Do Not Dry Clean.

HOW TO MEASURE



CHEST WIDTH

Measure under the arm and around the fullest part of the chest with arms down, keeping tape horizontal.

SIZE CHART

	XS	S	M	L	XL	2XL	3XL	4XL
Chest	32-34	35-37	38-40	41-43	44-46	47-49	50-53	54-57

COLOR INFORMATION

Please note: PMS code information is shown only when an exact match is available.



Deep Black
PMS BLACK C



Grey Steel



True Navy
PMS 533C



True Royal
PMS 7687C