



A smooth face, brushed back and contrast coverstitching make this warm fleece jacket a classier alternative to more casual fleece.

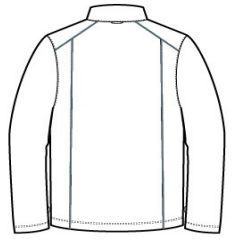
- Can be zipped in and secured by snap attachments inside an outer Collective layer
- 9.8-ounce, 100% polyester fleece
- Slightly longer length
- Vislon® center front zipper
- Front reverse-coil zippered pockets
- Open cuffs and hem

CARE INSTRUCTIONS

Machine wash cold with like colors; do not use fabric softener; tumble dry low; remove promptly; only non-chlorine bleach when needed; cool iron if necessary; do not dry clean.



front



back

HOW TO MEASURE



CHEST
Measure under the arm and around the fullest part of the chest with arms down, keeping tape horizontal.

SIZE CHART

	XS	S	M	L	XL	2XL	3XL	4XL
Chest	32-34	35-37	38-40	41-43	44-46	47-49	50-53	54-57

COLOR INFORMATION

				
Deep Black PMS NTR BLACK C	Graphite PMS 7540C	Gusty Grey PMS COOL GRAY 8C	Night Sky Blue PMS 654C	River Blue PMS 533C