

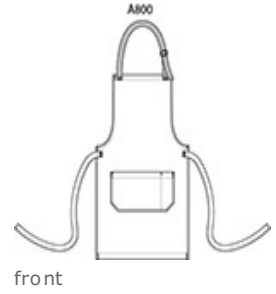


Craftsman styling creates a signature look in this apron that's perfect for bistros, pubs, cooking classes and more. The wrinkle-resistant fabric has a denim-like look which blends performance with style to make a sophisticated statement.

- 7-ounce, 60/40 cotton/poly yarn-dyed twill
- Adjustable contrast webbing neck strap with antique-finish metal slider
- Patch pocket, pen pocket
- Self-fabric waist ties
- Contrast stitch details
- Measures: 25"w x 34.5"l

**CARE INSTRUCTIONS**

Machine Wash Cold, Only Non Chlorine Bleach when needed, Tumble Dry Low, Do Not Dry Clean.



**SIZE CHART**

|             | OSFA   |
|-------------|--------|
| Length      | 34 1/2 |
| Waist Width | 25     |

**COLOR INFORMATION**



Ash Grey



Dark Midnight