



# District® Women's Medal Full-Zip Hoodie. DT665



Strengthen your style impact with this lightweight hoodie made for ease and versatility.

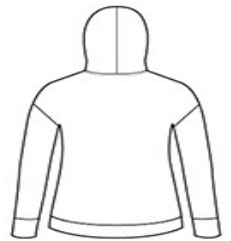
- 4.9-ounce, 90/10 combed ring spun cotton/poly, 30 singles
- Tear-away label
- Self-fabric back neck tape
- YKK Metaluxe® zipper
- Front pockets
- Self-fabric cuffs and hems

### CARE INSTRUCTIONS

Machine wash cold with like colors. Do not use fabric softener. Non-chlorine bleach, when needed. Tumble dry low. Remove promptly. Cool iron, if necessary.

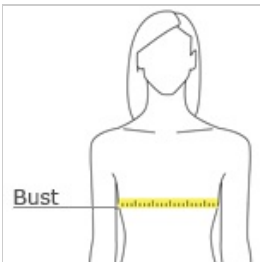


front



back

### HOW TO MEASURE



#### BUST

Measure under the arm and around the fullest part of the bust with arms down, keeping tape horizontal.

### SIZE CHART

	XS	S	M	L	XL	XXL	3XL	4XL
Size	2	4/6	8/10	12/14	16/18	20/22	24/26	28/30
Bust	32-34	35-36	37-38	39-41	42-44	45-47	48-51	52-55

### COLOR INFORMATION



Black  
PMS NTR BLACK  
C



Deep Royal



Light Grey  
PMS COOL GRAY PMS 433C  
6C



New Navy