



# District® Medal Full-Zip Hoodie. DT565



Strengthen your style impact with this lightweight hoodie made for ease and versatility.

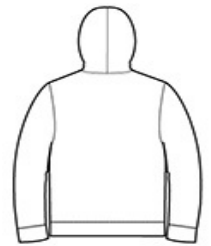
- 4.9-ounce, 90/10 combed ring spun cotton/poly, 30 singles
- Tear-away label
- Self-fabric back neck tape
- YKK Metaluxe® zipper
- Front pockets
- Self-fabric cuffs and hems

### CARE INSTRUCTIONS

Machine wash cold with like colors. Do not use fabric softener. Non-chlorine bleach, when needed. Tumble dry low. Remove promptly. Cool iron, if necessary.



front



back

### HOW TO MEASURE



#### CHEST

Measure under the arm and around the fullest part of the chest with arms down, keeping tape horizontal.

### SIZE CHART

	XS	S	M	L	XL	2XL	3XL	4XL
Chest	32-34	35-37	38-40	41-43	44-46	47-49	50-53	54-57

### COLOR INFORMATION



Black  
PMS NTR BLACK  
C



Deep Royal



Light Grey  
PMS COOL GRAY  
PMS 433C  
6C



New Navy