



# District® Lightweight Fleece Hoodie. DM391



This lightweight hoodie is extra soft for go-anywhere style.

- 6.5-ounce, 55/45 combed ring spun cotton/poly fleece
- Tear-away label
- Coverstitch details
- Back neck tape
- Dyed-to-match drawcords
- 2x2 rib knit cuffs and hem

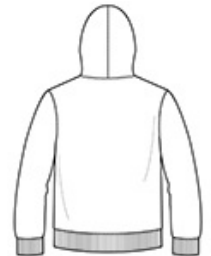
Please note: This product is transitioning from woven labels to tear-away labels. Your order may contain a combination of both labels.

### CARE INSTRUCTIONS

Machine wash cold. With like colors. Non-chlorine bleach if needed. Tumble dry low. Do not use fabric softener. Do not dry clean. Cool iron if needed.



front



back

### HOW TO MEASURE



#### CHEST

Measure under the arm and around the fullest part of the chest with arms down, keeping tape horizontal.

### SIZE CHART

	XS	S	M	L	XL	2XL	3XL	4XL
Chest	34-35	36-37	38-40	41-43	44-46	47-49	50-52	53-55

### COLOR INFORMATION



Heathered Black  
PMS 426C



Heathered Grey  
PMS 2379C



Heathered Navy  
PMS 2379C