



This breathable mesh vest has a hook and loop closure for easy on/off.

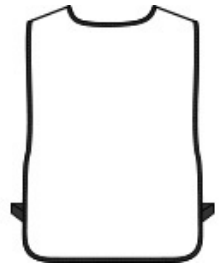
- 100% polyester mesh for breathability
- Fabric passes ANSI 107 requirement for chromaticity
- Contrast black binding
- Front hook and loop closure
- Non-ANSI

CARE INSTRUCTIONS

Machine wash cold. Only non chlorine bleach if needed. Tumble dry low. Warm iron if necessary. Do not dry clean.



front



back

SIZE CHART

	OSFA
Body Length at Back	23 1/2
Chest Width	14 1/4

COLOR INFORMATION

Safety Orange Safety Yellow