



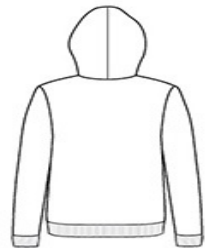
- 8.2-ounce, 50/50 poly/combed cotton fleece, 36 singles
- Made in the USA of US and imported materials
- Satin label
- Metal zipper
- Full-zip with white finished polyester drawcord and zipper tape
- Kangaroo pockets
- 1x1 rib knit cuffs and hem
- Classic fit

**CARE INSTRUCTIONS**

Maximum washing temperature 30 c, inside out, with like colors. Only oxygen/non-chlorine bleach allowed. Tumble dry at low temperature, max 60 c. Do not iron. Do not dry clean.



front



back

**HOW TO MEASURE**



**CHEST**  
Measure under the arm and around the fullest part of the chest with arms down, keeping tape horizontal.

**SIZE CHART**

	XS	S	M	L	XL	2XL
Chest	28-30	30-32	32-34	36-38	40-42	44-46

**COLOR INFORMATION**

				
Asphalt PMS CG11C	Black PMS B6C	Dark Heather Grey PMS 425C	Navy PMS 2767C	Sea Blue PMS 2377C